



# NEWSLETTER

## Mid Autumn Term 1

The children have settled very well into their new classes and they are working very hard for their new teachers. It has been a busy few weeks since we have returned with photographs, meet the teacher mornings, themed days and sporting events and there are still lots of exciting things coming up before half term.

### Parental Consultation Days:

Teachers will be holding parental consultations during the week commencing Monday 13<sup>th</sup> October.

The consultation dates are:

- Monday, 13 October – face to face/virtual
- Tuesday, 14 October - virtual
- Wednesday, 15 October – face to face/virtual

The system to book consultation slots will go live on Monday 29<sup>th</sup> September at midday. Please can you inform the school office as soon as possible if you don't receive a link to book your consultation.

### Eco- Schools Green Flag Award

We would like to say a BIG CONGRATULATIONS to our Eco-Council who worked hard with Miss Page to achieve our Green Flag Award last year. The children did a fantastic job, and we have been awarded the Green Flag. Thank you to all of the children, the staff and members of our school community for supporting us with completing our action plan. Our new Eco-Council are looking forward to continuing to develop and improve our school grounds, building on the work that has already been started and starting some exciting new projects as well.

### New Website

We are pleased to announce that our new school website is now up and running. There is lots of valuable information on the website including policies and school information as well as class pages which have class information, the learning for the term and useful resources such as spelling lists.



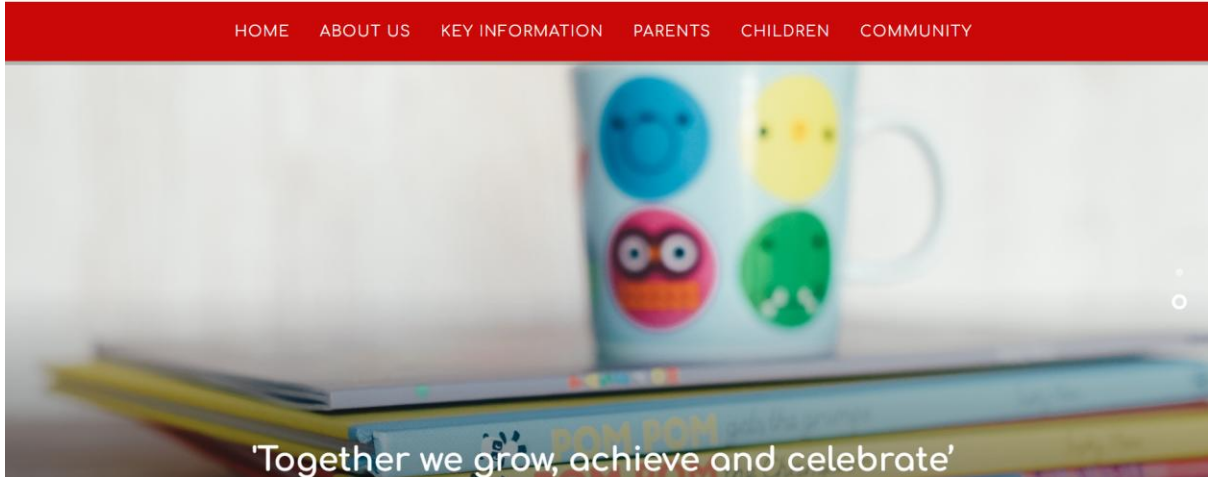


Woolaston Primary School

+ QUICKLINKS



HOME ABOUT US KEY INFORMATION PARENTS CHILDREN COMMUNITY



## European Day of Languages

On Friday 26<sup>th</sup> September we celebrated European Day of Languages by dressing up and learning about a different European country for the day. The children really enjoyed the day exploring the language, art and culture of another country.





### EYFS Class

The EYFS children have settled really well into school and it is lovely to see them in assembly and on the yard with the older children when it is 'Football Friday', The older children are doing a fantastic job of engaging our younger children in games and reading them stories and they love their role of responsibility!





### After School Prostars Clubs

There is still availability for clubs, please contact the School Office to book a space for your child.

There will be a minimal fee of £2 per session for each club your child attends.

Term 1	Monday	29 <sup>th</sup> September – 20 <sup>th</sup> October	3.30 - 4.15pm	Y1&Y2 Multi Sports
	Tuesday	30 <sup>th</sup> September – 21 <sup>st</sup> October	3.30 - 4.15pm	KS2 Football
	Wednesday	1 <sup>st</sup> October – 22 <sup>nd</sup> October	3.30 - 4.15pm	KS2 Chess and Board Games
	Thursday	2 <sup>nd</sup> October – 23 <sup>rd</sup> October	3.30 - 4.15pm	Y1 and Y2 Football
	Friday	3 <sup>rd</sup> October – 17 <sup>th</sup> October	3.30 - 4.15pm	KS2 Tag Rugby

### 2026 Admissions Open Day

We will be holding open days for the parents of pupils starting in reception in September 2026. The open days are on:

Thursday 2<sup>nd</sup> October at 2.00pm

Wednesday 8<sup>th</sup> October at 10.00am

Thursday 16<sup>th</sup> October at 10.00am

These open days will give parents and children the opportunity to come and see our wonderful school. Please share these dates with anyone with a child who will be starting reception in September 2026.

### School Attendance

Now our wonderful reception pupils are settled and are in full time, we will be monitoring attendance in the school.

Parents are responsible for making sure their children attend school regularly and on time. We actively encourage parents to make health and dental appointments outside of school hours. We do however recognise that medical appointments issued by healthcare professional occur in school hours and as such, will be authorised. We also understand that children will be unwell, and we do not encourage poorly children to attend school.





Every Monday we hold a celebration assembly with the children and have been able to celebrate the attendance of the children and the classes that achieve 100%.

The whole school target is 100%. Children are expected in school at all times the school is open.

	Sparrow Class YR/Y1	Starling Class Y1/Y2	Robin Class Y3/Y4	Woodpecker Class Y4/Y5	Heron Class Y6
Attendance	96.6%	97.2%	97%	98.1%	96.2%
Late Marks	2	3	0	0	0
Pupils 100% Attendance	7	22	20	18	10

**Congratulations to Woodpecker class achieving the highest attendance.**

<u>Whole School Attendance</u>	<u>Persistent Absenteeism (PA)</u>	<u>National Average YTD</u>
97.2%	8.5%	96.2%

### Introducing Our Fantastic Play Leaders!

We are delighted to introduce our wonderful new Play Leaders! The Woodpecker children have embraced their roles brilliantly, showing respect, compassion, and responsibility. As part of their duties, they help set up the lunchtime equipment and support Key Stage 1 children with their reading for pleasure on Friday lunchtimes. We are so proud of the enthusiasm and care they bring to their new responsibilities! Well done children.

Miss Niblett





## Lunchtimes at Woolaston are bursting with fun!

We are delighted to share that our lunchtime provision has been enriched with a wonderful variety of new play equipment. Children can now enjoy:

- A giant **Snakes and Ladders** game
- Exciting **dance resources**
- **Circus skills equipment** to practise balance and coordination
- **Bats and balls** for active play
- Creative **bead activities**
- A wide selection of **reading books and magazines**
- Cuddly **teddies**
- Brand-new **football goals**

The children have thoroughly enjoyed exploring and making the most of these new resources. We are incredibly lucky to have such a vast array of equipment, which has filled our lunchtimes with laughter, fun, creativity, and teamwork.

This term our school value is **Respect**, and it has been wonderful to see the children showing this so beautifully by sharing equipment, taking turns, and playing kindly with one another.





Look how much fun our lunchtimes are!



# Team Infinity





## **Non-school uniform**

Non- school uniform Thursday 23<sup>rd</sup> October is non-school uniform day. Children can wear non-school uniform in exchange for a donation to the school PTFA. This will be payable via Parent Pay.

## **Nasal Flu Programme – Reception – Year 6**

Wednesday 15<sup>th</sup> October 2024 Please ensure you have completed an online flu form for each child who attends Woolaston. These need to be completed even if you are not consenting for your child to be vaccinated.

## **Reminders**

### **Packed Lunches**

Packed lunches should not contain any nuts as we have children with nut allergies.

### **School meal booking**

Please ensure your child's meal is booked in advance of the day, preferably a week ahead.

### **Community Leaflets**

Please click on community on our website to see the latest news and events.  
<https://woolastonprimary.ovw10.juniperwebsites.co.uk/community-leaflets>

### **Contact Information**

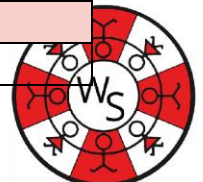
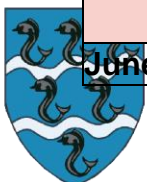
Please ensure you advise the School Office of any changes to your contact details. It is vital that we have your up-to-date information for all correspondence purposes and in case of emergency. Please email any changes to [office@woolaston.gloucs.sch.uk](mailto:office@woolaston.gloucs.sch.uk)





## School Diary – Dates for the Academic Year 2025-2026

October 2025	Thursday 2 <sup>nd</sup>	Open Days (for parents of prospective EYFS in Sept 2026) <b>2:00pm</b> Wydean Open Evening – Year 5 & Year 6 – 4:45pm-7:00pm
	Wednesday 8 <sup>th</sup>	Open Days (for parents of prospective EYFS in Sept 2026) <b>10:00am</b>
	<b>Monday 13<sup>th</sup></b>	<b>Parental Consultations</b>
	<b>Tuesday 14<sup>th</sup></b>	<b>Parental Consultations</b>
	<b>Wednesday 15<sup>th</sup></b>	<b>Parental Consultations</b>
	Wednesday 15 <sup>th</sup>	Nasal Flu Programme – Reception – Year 6
	Thursday 16 <sup>th</sup>	Open Days (for parents of prospective EYFS in Sept 2026) <b>10:00am</b>
	Thursday 23 <sup>rd</sup>	PTFA – Non-Uniform Day
	Friday 24 <sup>th</sup>	Inset Day- No pupils on site
	Monday 27 <sup>th</sup> – Friday 31 <sup>st</sup>	Half Term
<b>November 2025</b>	Monday 3 <sup>rd</sup>	Start of Autumn Term 2
	Friday 14 <sup>th</sup>	Children in Need
<b>December 2025</b>	Monday 22 <sup>nd</sup> – Friday 2 <sup>nd</sup> January	Christmas Half Term
<b>January 2026</b>	Monday 5 <sup>th</sup>	Inset Day – No pupils onsite
	Tuesday 6 <sup>th</sup>	Start of Spring Term 3
	Thursday 8 <sup>th</sup> – Thursday 12 <sup>th</sup> February	Swimming Year 5 – Letter to follow
<b>February 2026</b>	Monday 16 <sup>th</sup> – Friday 20 <sup>th</sup>	Half Term
	Monday 23 <sup>rd</sup>	Start of Spring Term 4
<b>March 2026</b>	Monday 30 <sup>th</sup> – Friday 10 <sup>th</sup> April	Easter Half Term
<b>April 2026</b>	Monday 13 <sup>th</sup>	Start of Summer Term 5
<b>May 2026</b>	Monday 4 <sup>th</sup>	Early Bank Holiday
	Monday 25 <sup>th</sup>	Bank Holiday
	Tuesday 26 <sup>th</sup> – Friday 29 <sup>th</sup>	Half Term
<b>June 2026</b>	Monday 1 <sup>st</sup>	Inset Day – No pupils on site





	Tuesday 2 <sup>nd</sup>	Start of Summer Term 6
July 2026	Friday 17 <sup>th</sup>	Year 6 Leavers Assembly 2.30pm
		End of Term

### Should I Keep my child off school

Please see the latest guidance regarding illnesses.



# Should I keep my child off school?



## Yes

### Until...

Chickenpox	at least 5 days from the onset of the rash and until all blisters have crusted over
Diarrhoea and Vomiting	48 hours after their last episode
Cold and Flu-like illness (including COVID-19)	they no longer have a high temperature and feel well enough to attend. Follow the national guidance if they've tested positive for COVID-19.
Impetigo	their sores have crusted and healed, or 48 hours after they started antibiotics
Measles	4 days after the rash first appeared
Mumps	5 days after the swelling started
Scabies	they've had their first treatment
Scarlet Fever	24 hours after they started taking antibiotics
Whooping Cough	48 hours after they started taking antibiotics

## No

but make sure you let their school or nursery know about...

Hand, foot and mouth	Glandular fever
Head lice	Tonsillitis
Threadworms	Slapped cheek



SCAN ME

### Advice and guidance

To find out more, search for health protection in schools or scan the QR code or visit <https://qrco.de/minfec>.

© Crown Copyright 2022. Product code: M65271EN, 50x A4 MB, 2022 (A5) P3, Gateway number: 20211451

